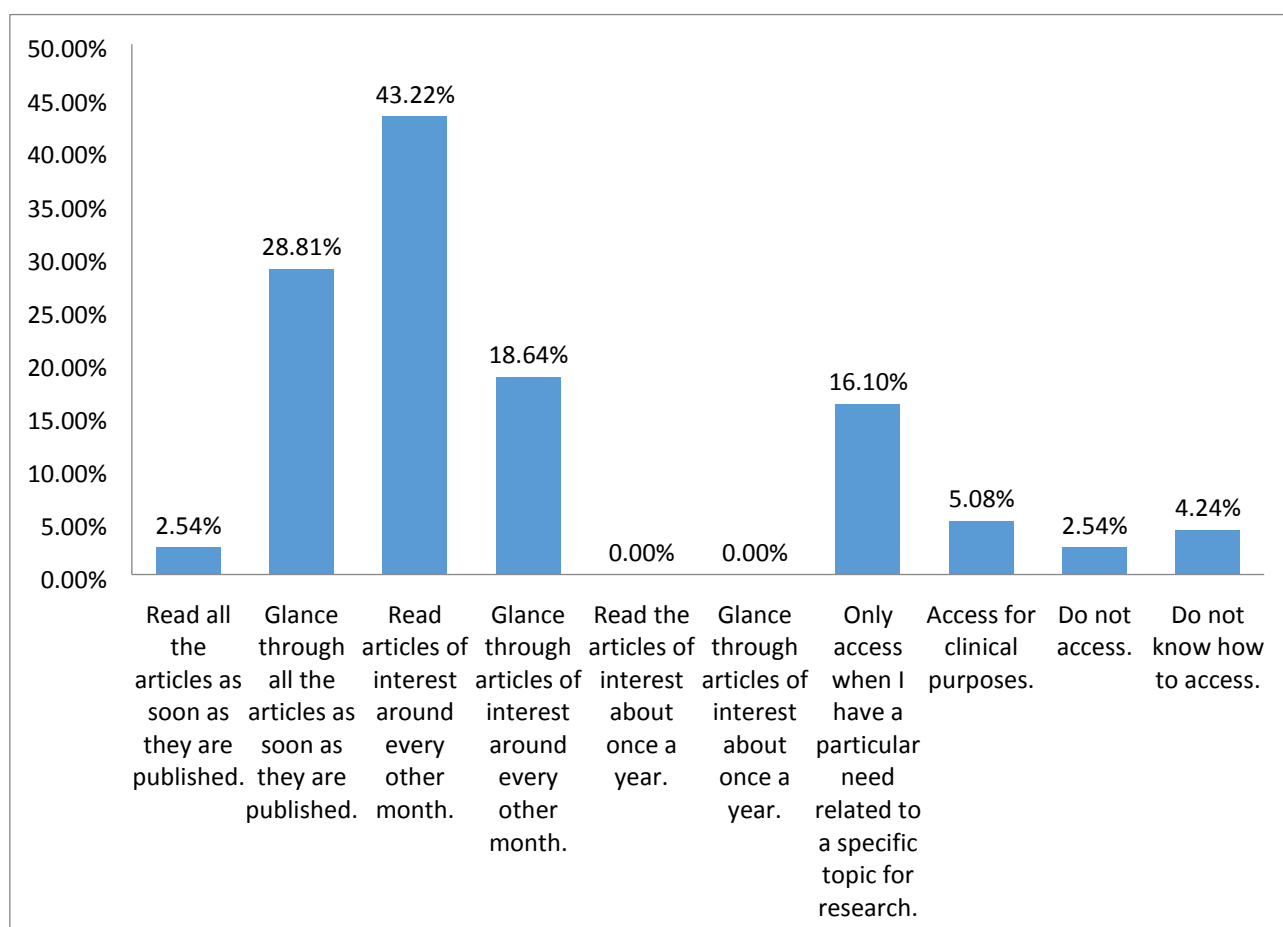


## Outcome of Survey of members for ISCoS Journals

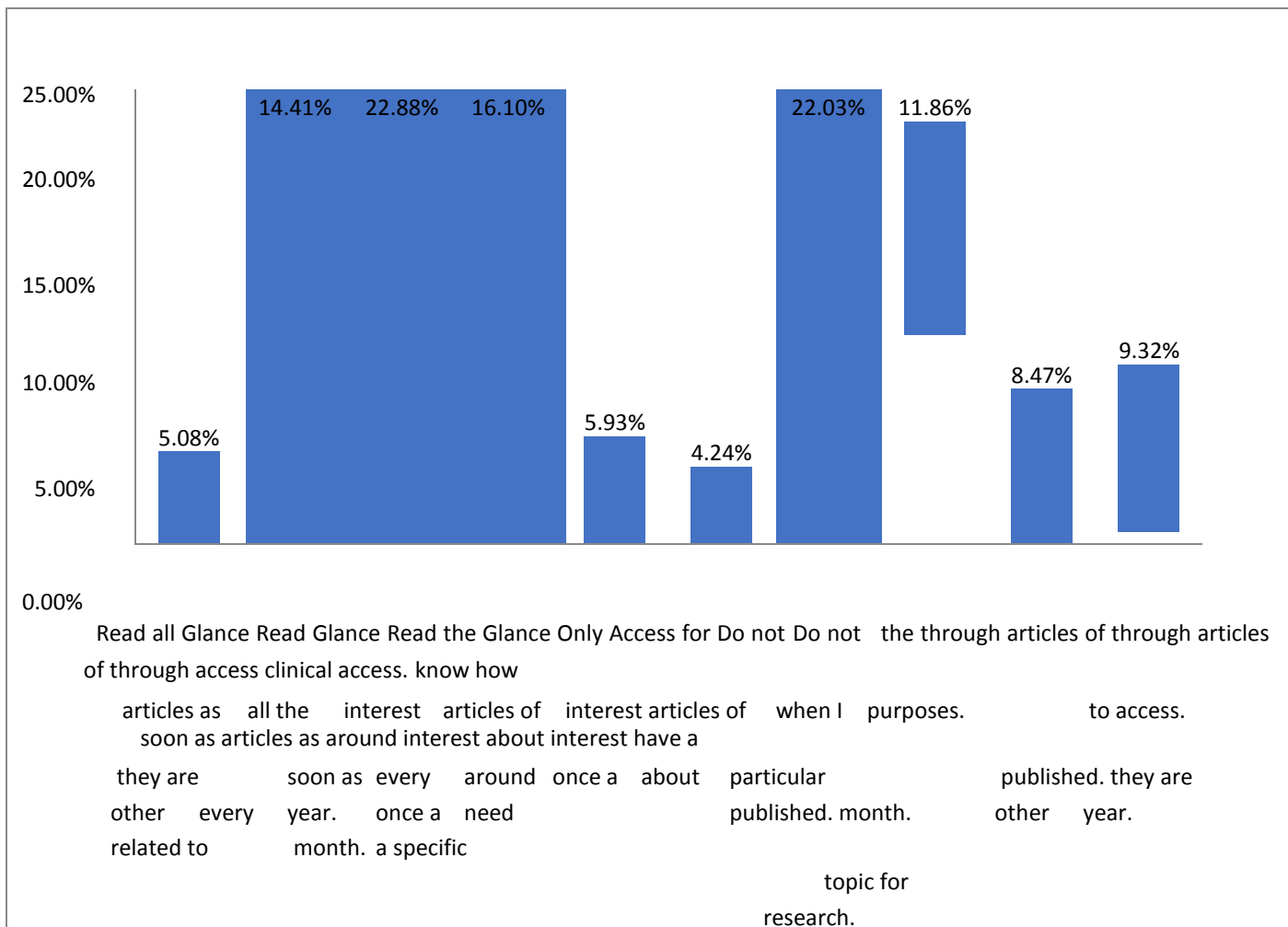
### How regularly do you access Spinal Cord?

ANSWER CHOICES	RESPONSES
Read all the articles as soon as they are published.	2.54%
Glance through all the articles as soon as they are published.	28.81%
Read articles of interest around every other month.	43.22%
Glance through articles of interest around every other month.	18.64%
Read the articles of interest about once a year.	0.00%
Glance through articles of interest about once a year.	0.00%
Only access when I have a particular need related to a specific topic for research.	16.10%
Access for clinical purposes.	5.08%
Do not access.	2.54%
Do not know how to access.	4.24%
Total Respondents: 118	



# How regularly do you access Spinal Cord Series & Cases?

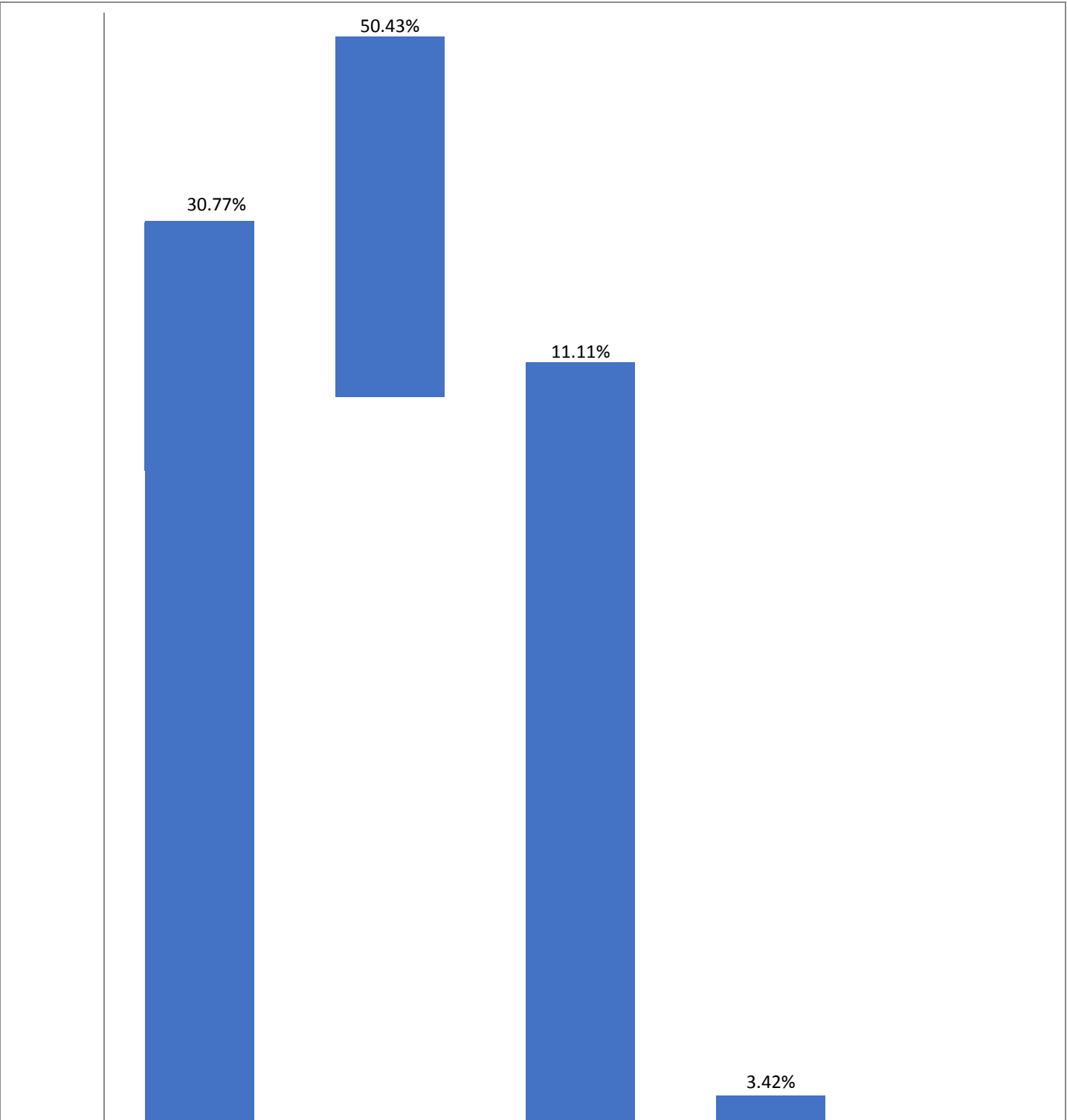
ANSWER CHOICES	RESPONSES
Read all the articles as soon as they are published.	5.08%
Glance through all the articles as soon as they are published.	14.41%
Read articles of interest around every other month.	22.88%
Glance through articles of interest around every other month.	16.10%
Read the articles of interest about once a year.	5.93%
Glance through articles of interest about once a year.	4.24%
Only access when I have a particular need related to a specific topic for research.	22.03%
Access for clinical purposes.	11.86%
Do not access.	8.47%
Do not know how to access.	9.32%
Total Respondents: 118	

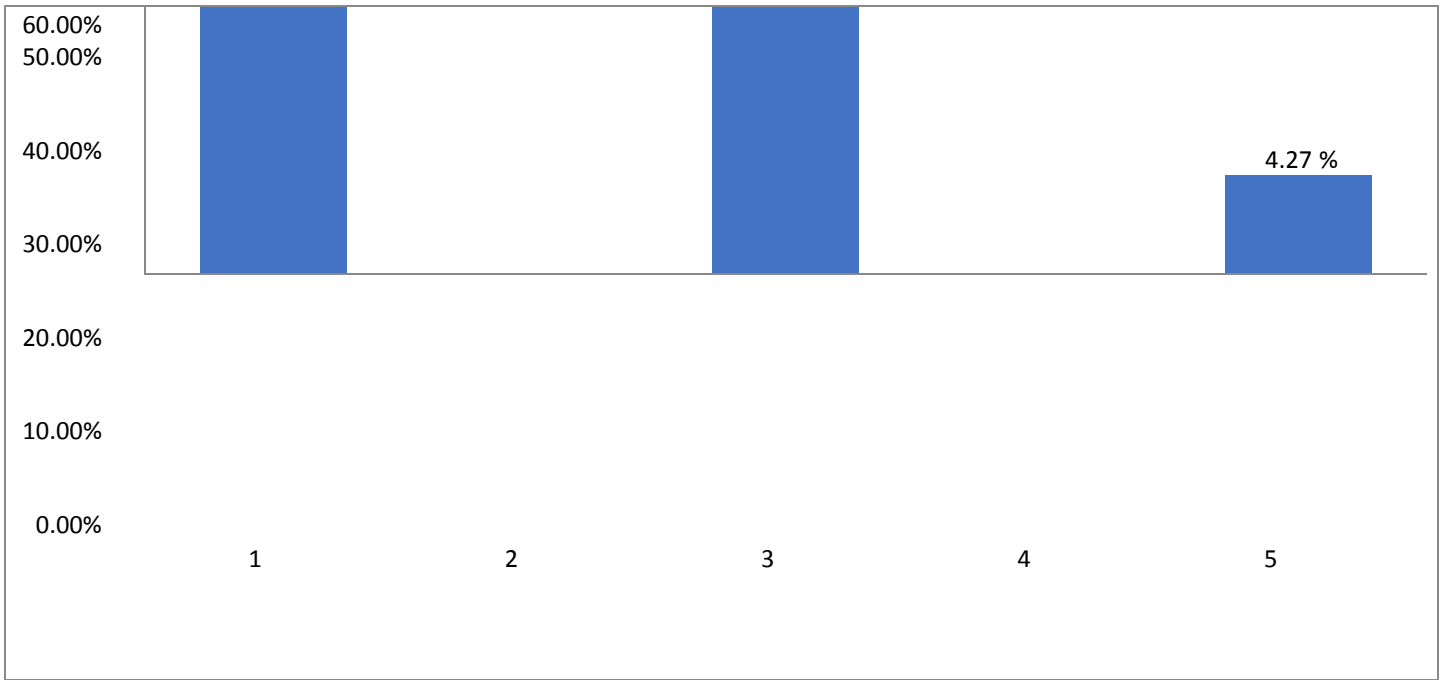


What values does Spinal Cord add to your knowledge and practice

(please respond on a scale of 5 to 1 with 5 indicating a lot of value and 1 minimum value)?

ANSWER CHOICES	RESPONSES
5	30.77%
4	50.43%
3	11.11%
2	3.42%
1	4.27%
TOTAL	117

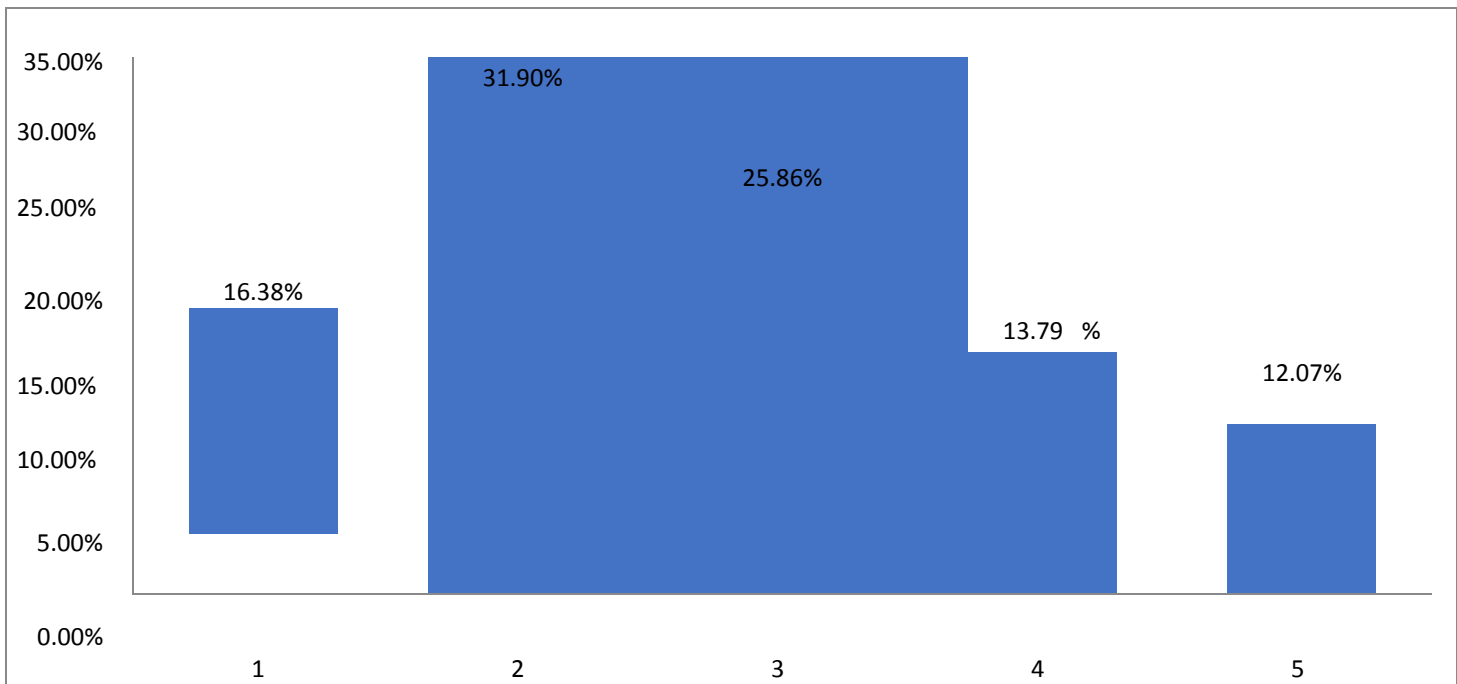




What value does Spinal Cord Series & Cases add to knowledge and practice (please respond on a scale of 5 indicating a lot of value and 1 minimum value)?

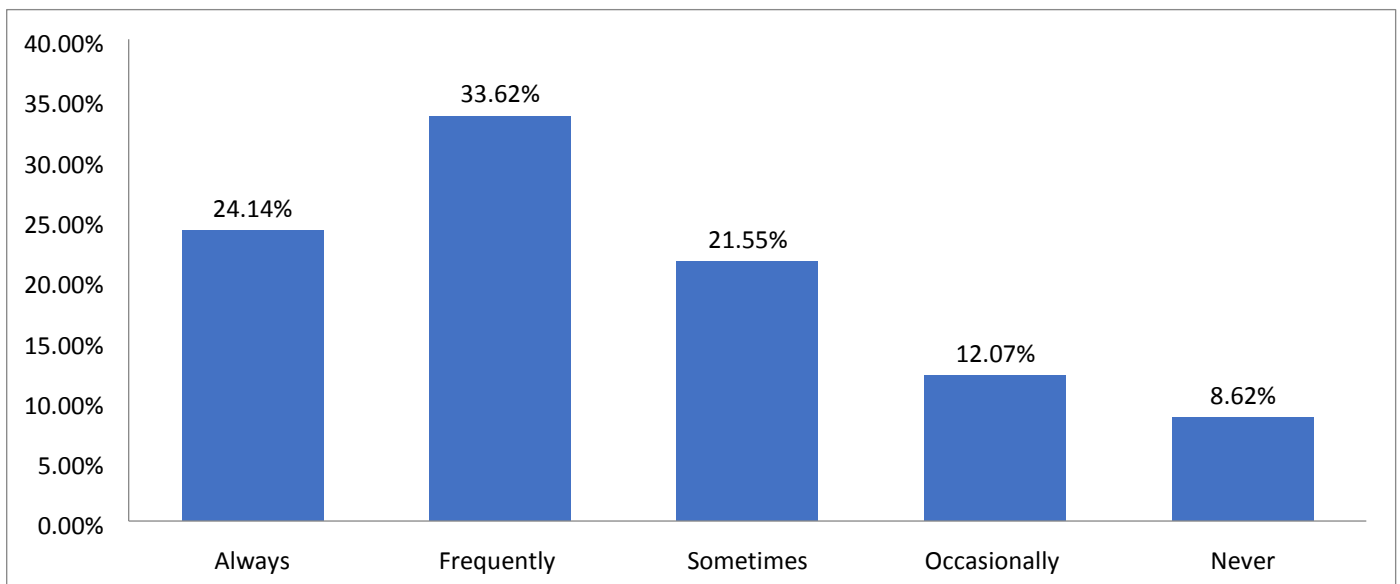
your  
to 1 with 5

ANSWER CHOICES	RESPONSES
5	16.38%
4	31.90%
3	25.86%
2	13.79%
1	12.07%
TOTAL	116



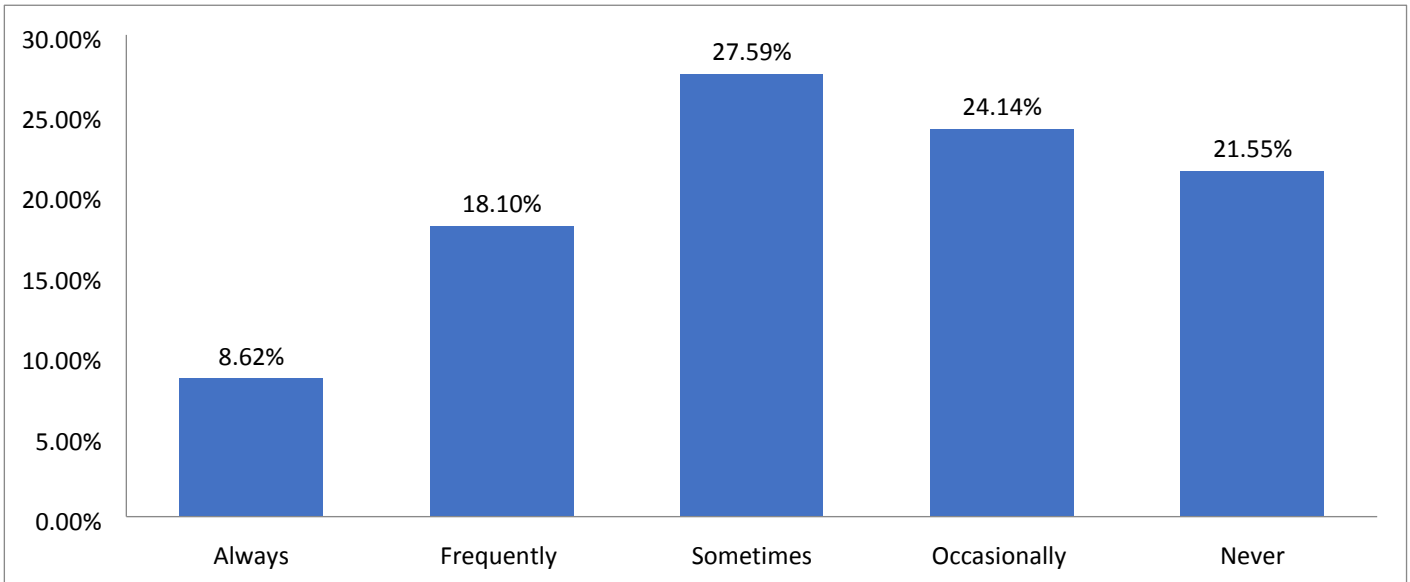
## Do you prefer to publish in Spinal Cord?

ANSWER CHOICES	RESPONSES
Always	24.14%
Frequently	33.62%
Sometimes	21.55%
Occasionally	12.07%
Never	8.62%
TOTAL	116



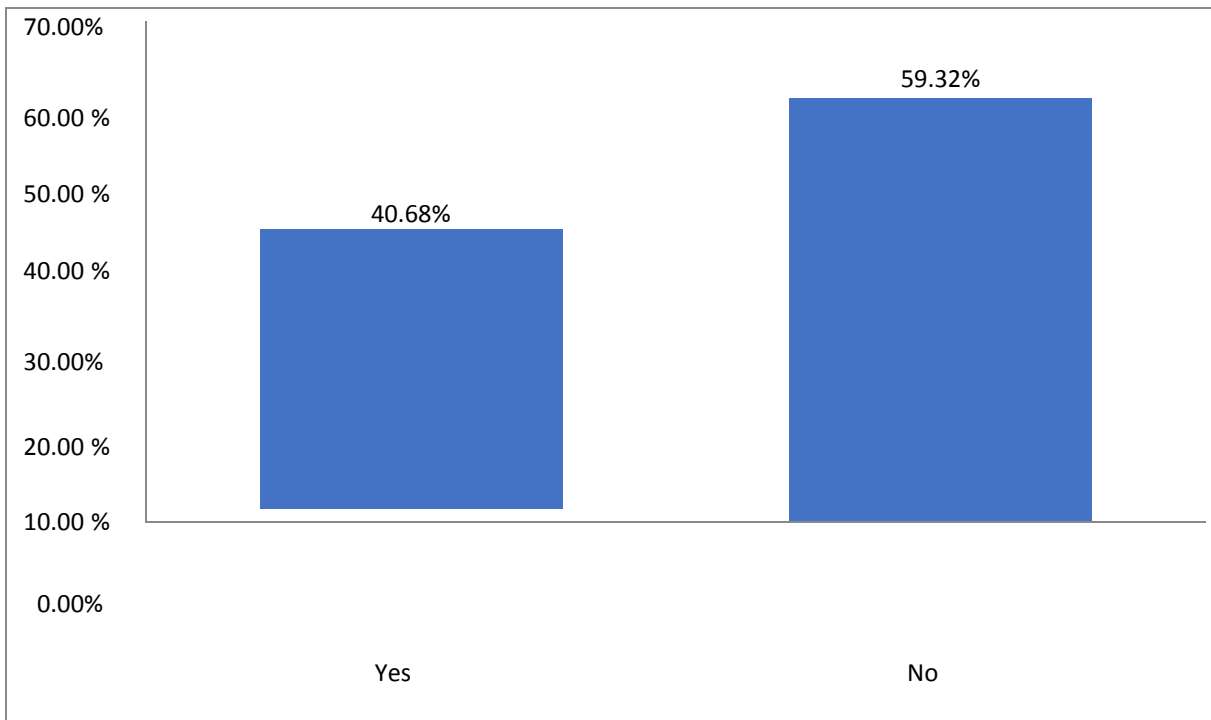
Do you prefer to publish in Spinal Cord Series & Cases?

ANSWER CHOICES	RESPONSES
Always	8.62%
Frequently	18.10%
Sometimes	27.59%
Occasionally	24.14%
Never	21.55%
TOTAL	116



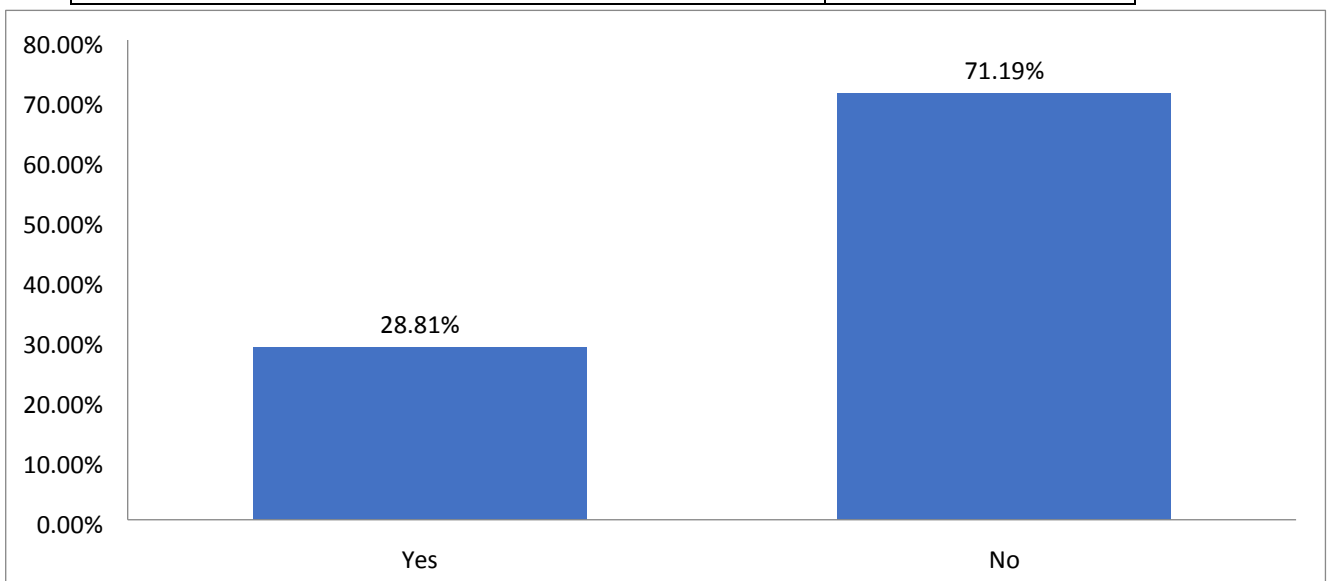
Have you submitted/published in Spinal Cord in the last 12 months?

ANSWER CHOICES	RESPONSES
Yes	40.68%
No	59.32%
TOTAL	118



Have you submitted/published in Spinal Cord Series & Cases in the last 12 months?

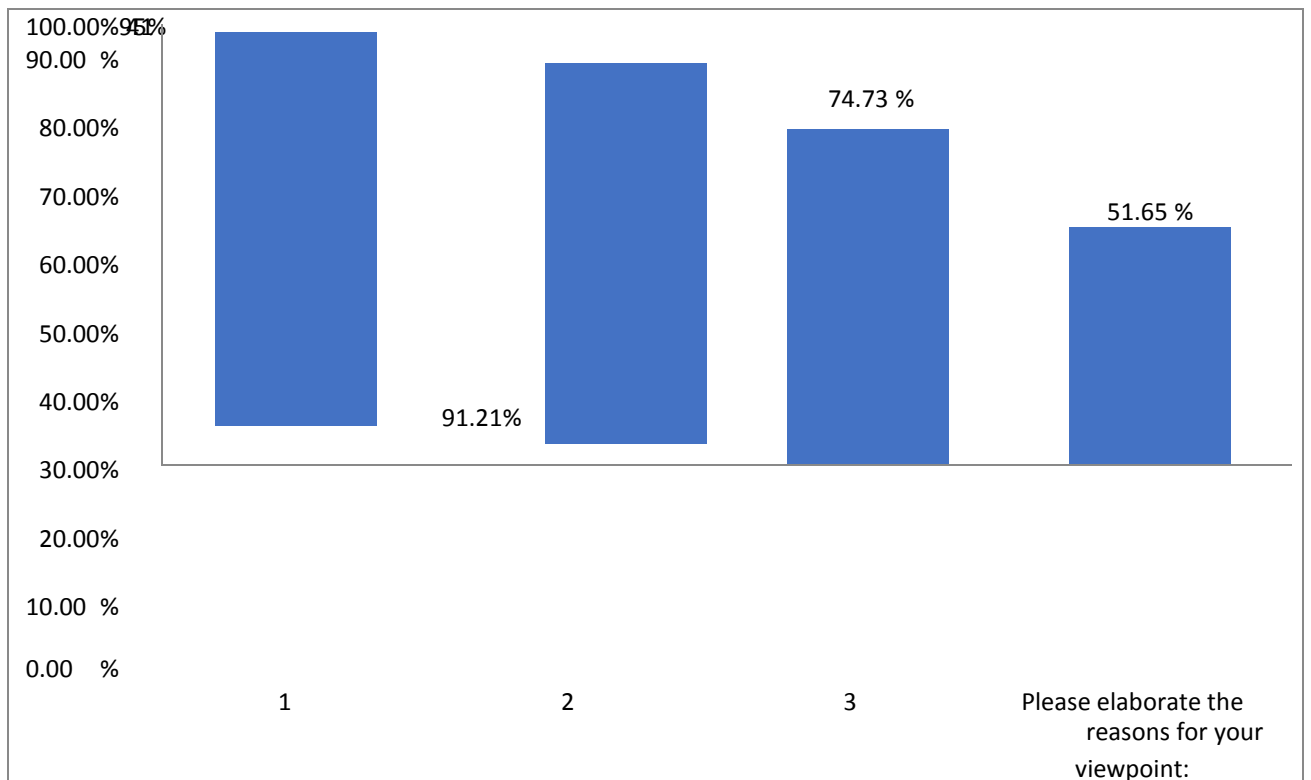
ANSWER CHOICES	RESPONSES
Yes	28.81%
No	71.19%
TOTAL	118





Please mention your choice in order of priority  
for publishing your research/work in the field of  
**Spinal Cord Injury.**

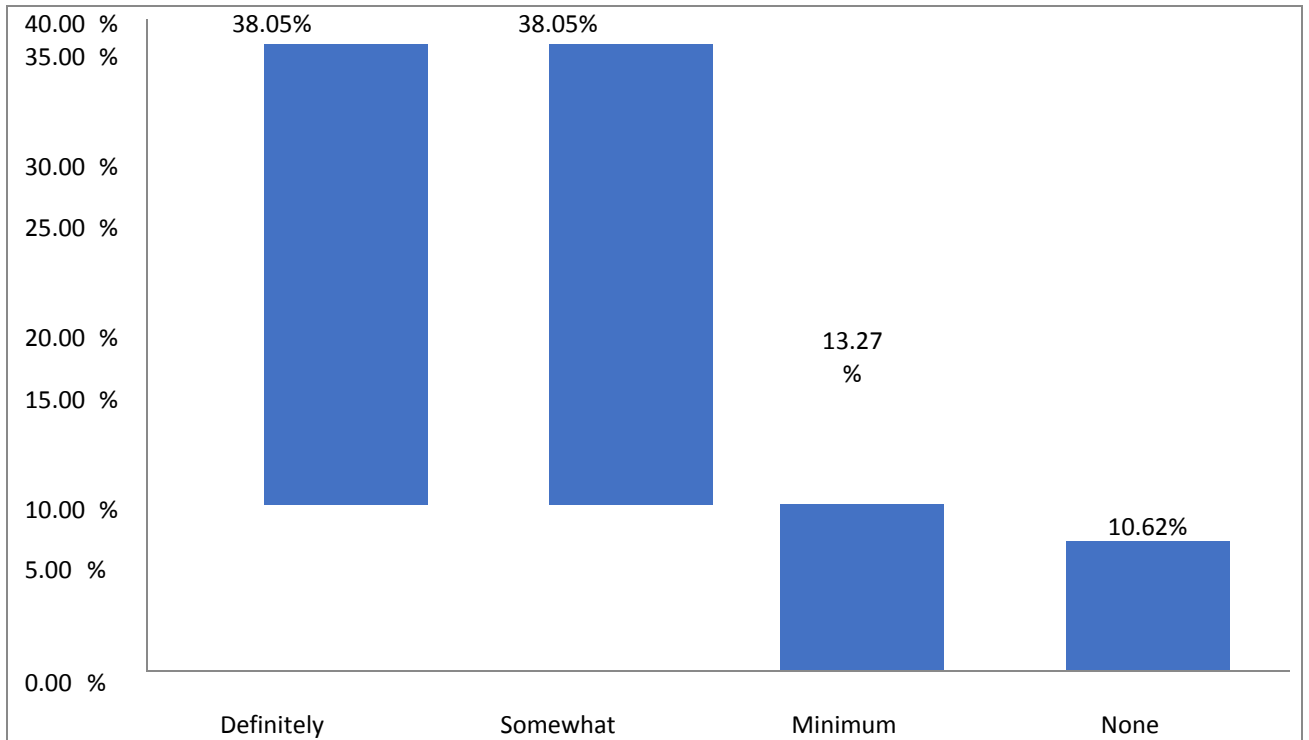
ANSWER CHOICES	RESPONSES
1	94.51%
2	91.21%
3	74.73%
Please elaborate the reasons for your viewpoint:	51.65%



Has the addition of Spinal Cord Series & Cases added further  
value to your knowledge and care of people with SCIs or  
research ideas?

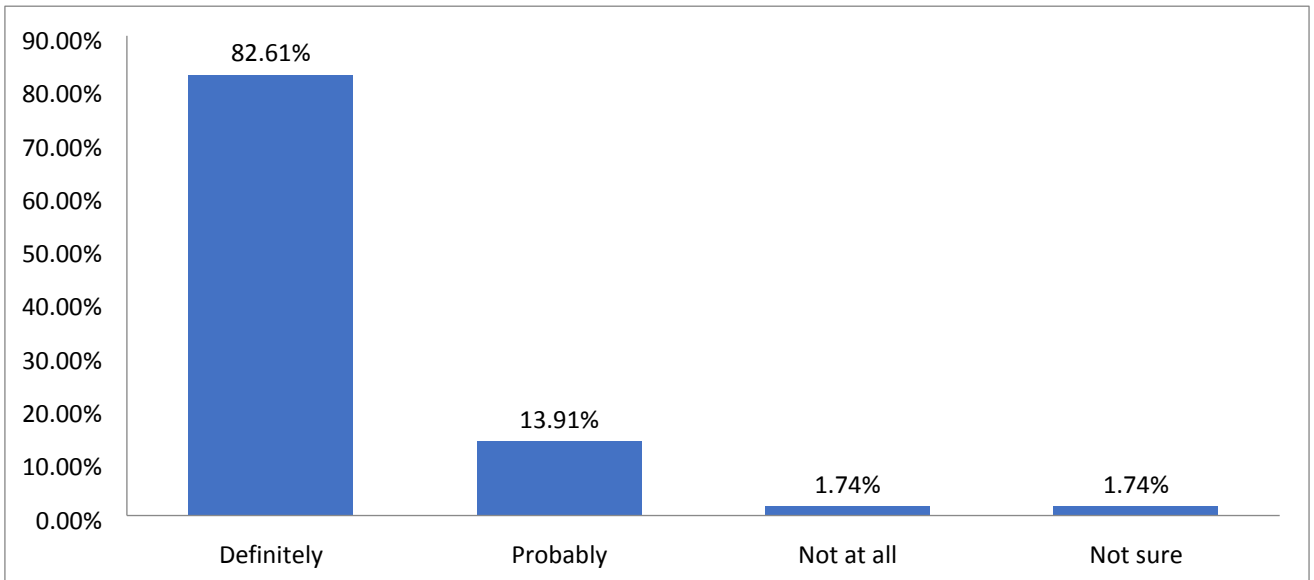
ANSWER CHOICES	RESPONSES
Definitely	38.05%
Somewhat	38.05%
Minimum	13.27%

None	10.62%
TOTAL	113



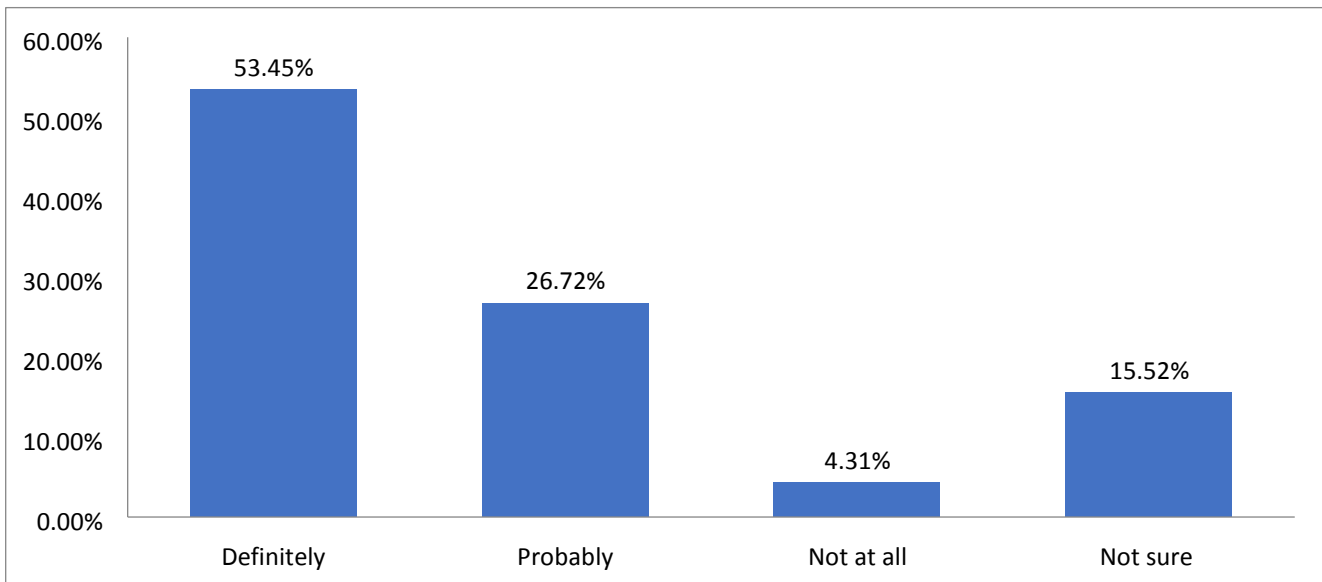
Would you recommend Spinal Cord to your other colleagues?

ANSWER CHOICES	RESPONSES
Definitely	82.61%
Probably	13.91%
Not at all	1.74%
Not sure	1.74%
TOTAL	115



Would you recommend Spinal Cord Series & Cases to your other colleagues?

ANSWER CHOICES	RESPONSES
Definitely	53.45%
Probably	26.72%
Not at all	4.31%
Not sure	15.52%
TOTAL	116



## Any suggestions/inputs for the Journals?

ANSWER CHOICES	RESPONSES
Spinal Cord	94.00%
Spinal Cord Cases & Series	82.00%

